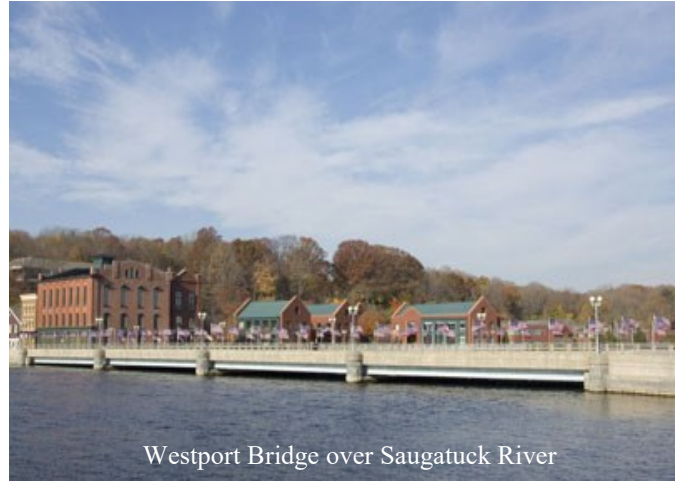




Welcome to Westport, Connecticut

County: Fairfield
Population: 25,104
Square Miles: 33.
Government: Selectman
Distance to Major Cities:
Boston: 147 miles
Hartford: 57 miles
New York City: 43miles



Westport Bridge over Saugatuck River

Westport is a beautiful coastal town located approximately 47 miles north of New York City. Originally an artists' colony, the town has held strong to its cultural roots while expanding into an affluent community. Connecticut Magazine ranked Westport the #1 town in their Rate the Town issue for populations 25,000 to 50,000 again in 2011. Westport's small-town atmosphere provides residents with a quaint haven away from the bustle of larger cities. Of course its proximity to New York City means you're still only an hour away from enjoying the big-city benefits! The downtown area offers a robust shopping experience with everything from one-of-a-kind boutiques to international luxury retailers.

The thriving arts community offers outstanding performances at the Levitt Pavilion and The Westport Country Playhouse. Of course the quality of life extends past award-winning entertainment and shopping.... a first-rate public school system. Westport's public high school was ranked by Newsweek magazine in 2005 as one of the top high schools in the country.

Westport also has amazing parks such as Compo Beach and Sherwood Island State Park, located on Long Island Sound for picnic areas and beach, and Longshore Country Club is available to residents for golf, swimming, sailing and fine dining.

Westport has easy access to Interstate 95, the Merritt Parkway, and U.S.1 as well as the Saugatuck River, which runs right through the town. Green's Farms and Westport have train stations on Metro-North railroad with service to Grand Central terminal in New York City.

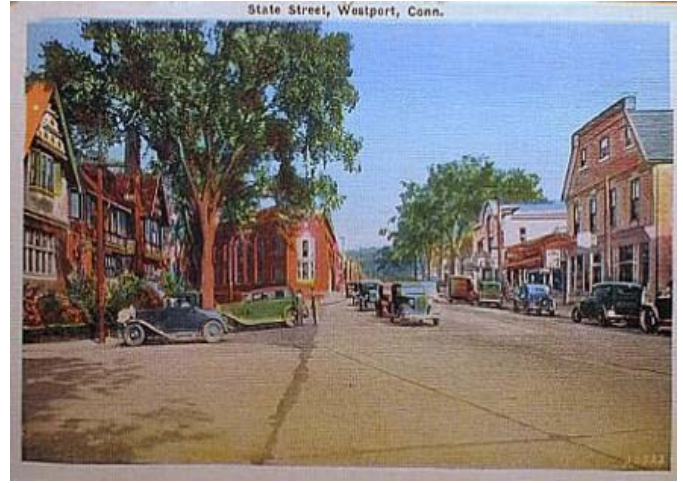
Many famous entertainers have called Westport home, most notably actor Paul Newman. Many corporations make Westport home such as Bridgewater Associates, Canaan Partners, dLife, Terex and the global non-profit organization Save the Children.

There are unique real estate opportunities in areas such as Compo Beach, Greens Farms and Old Hill, from new construction homes to luxury condos in many price ranges. Westport is a thriving and creative community - come take advantage of all it has to offer!

To see more of Westport Visit : Westportunzipped.com



Minute Man at Compo Beach 1912



Postcard of Post Road 1937

Westport, CT History:

Although colonists settled along the Saugatuck River in 1639, Westport was officially incorporated as a town in 1835 with land taken from Fairfield, Weston and Norwalk. For several decades after that, Westport was a prosperous agricultural community, which distinguished itself as the nation's leading onion-growing center. Westport's Compo Beach was the site of a British expeditionary force's landing, in which about 2,000 British soldiers marched to Danbury and razed it, resulting in the Battle of Ridgefield. They were attacked on the way and attacked upon landing by Minutemen from Westport and the surrounding areas. A statue of a Minuteman, rifle in hand, is located near Compo Beach.



Postcard of Main Street 1913



Westport Town Hall